

EU new tyre labelling regulations

The tyre labelling regulation introduces :

- Fuel efficiency / wet grip / external rolling noise of tyres

Its aim is to :

- Improve safety
- Improve environmental and economic efficiency of road transport by promoting fuel efficient and safe tyres
- Lower noise levels

Actual fuel saving and road safety depends heavily on the behaviour of drivers and in particular the following :

- Eco-driving can significantly reduce fuel consumption
- Tyre pressure should be regularly checked to optimise wet grip and fuel efficiency performance
- Stopping distances should always be strictly respected



Fuel efficiency
rolling resistance (R,R)

Wet grip
braking performance

Noise level
exterior noise

Recommended / available vehicle & position

AH31



DH31



● Recommended position
● Available position



SMART^{flex} AH31 SMART^{flex} DH31

All season tyre for variable road conditions





SMART FLEX AH31

Hybrid segment tyre for multi purposes

All season tyre for variable road conditions

Adopted new technology and design provides increased safety with an economic advantage to the customer.

Wide tread and shoulder

Longer mileage and better handling performance.

Multi 3-Dimensional kerf design

Better traction, increased mileage, controlled tearing and wearing with less irregular wear.

Tread wear equalised stepper (T.W.E.S)

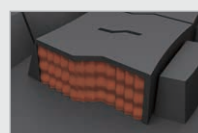
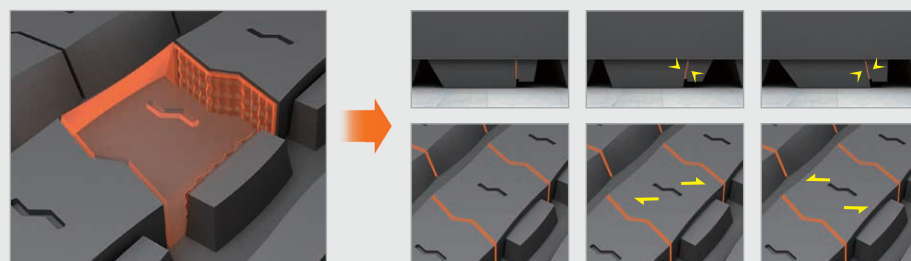
Controlled tearing and wearing.

M+S and 3PMSF marking

In all seasons, dry, wet and snow.



3-Dimensional kerf



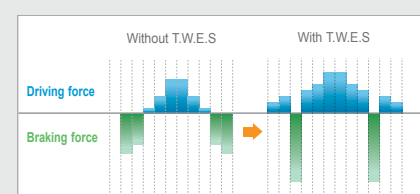
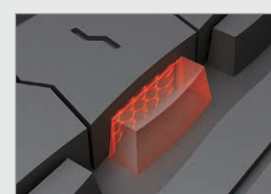
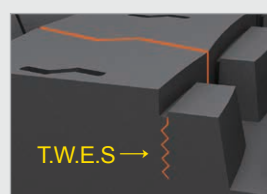
Controlled wear and tear

➡ Improves mileage.

Full depth kerf applied

➡ Keeps good traction during whole life.

T.W.E.S : Tread wear equalised stepper



Controlled wear and tear

➡ Improvement one-sided wear.



SMART FLEX DH31

Hybrid segment tyre for multi purposes

All season tyre for variable road conditions

Adopted new technology and design provide increased safety with an economic advantage to the customer.

3-Dimensional kerf design

Better traction, increased mileage and reduced irregular wear.

Combination structure of rib and 6 angle block pattern

Improved grip, increased mileage and enhancement of handling performance.

Self-regenerating kerfs (S.R. kerfs)

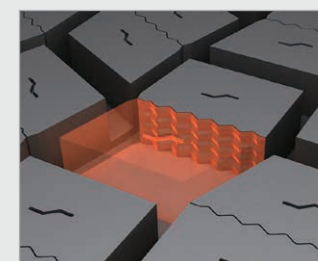
Controls tearing and wearing hidden grooves whilst maintaining traction at the end of the groove wear.

M+S and 3PMSF marking

In all seasons, dry, wet and snow.



3-Dimensional kerf

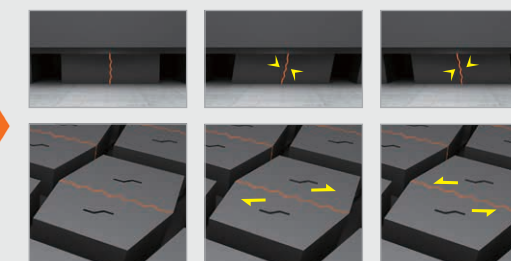


3D Kerf

Lateral / tangential direction

Zigzag type :

Applying full depth kerfs helps maintain a binding force between blocks.



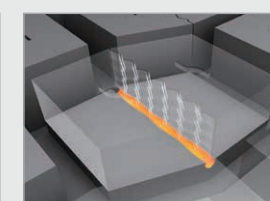
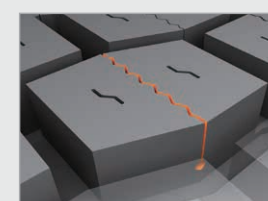
Controlled tearing and wearing

➡ Improves mileage.

Full depth kerfs applied

➡ Keeps good traction during whole life.

Self-regenerating kerf (S.R. kerf)



Self-regenerating kerfs (S.R. kerfs)

Venturi-shape from Hankook's patent

➡ Keeps good traction during the tyres lifespan.

➡ Protects tearing at the edge of the 3D-kerfs.