



**HANKOOK**  
driving emotion

Global  
Partner



**AH30**

*Steer axle radial tire for regional haul*



**AH30**

**Structurally designed for improved durability,  
ride, and handling performance**

**Belt structure**

Minimized motion of belts for reduced heat generation.

**Carcass**

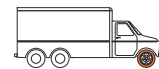
Optimized carcass structure for better ride and handling.

**Improved bead**

Optimized bead profile for superior retreadability.



**Recommended / Available vehicle & position**



 Recommended position

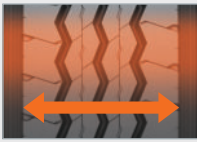


## Regional steer position tire for exceptional traction and mileage performance

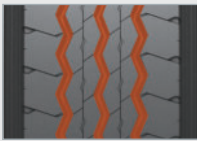
**Kontrol**  
technology

Kontrol Technology is Hankook Tire's technology philosophy which reflects how the tire should perfectly control the interaction between the driver, the car and the road while in motion. It is implemented to ensure Hankook Tire provides the greatest benefits and driving experiences to customers in terms of safety, driving comfort, handling, performance and environmental friendliness. The AH30 is an example of a tire which embodies Kontrol Technology.

### Pattern Concept

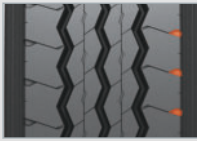


A wide tread profile provides stability and uniformity which reduces distortion, delivering outstanding handling performance and improved tread life.



Improves traction and braking performance by expanding the point of intersection throughout aggressive 3 zig-zag main grooves.

Optimized asymmetric groove angle enables prevent stone retention.



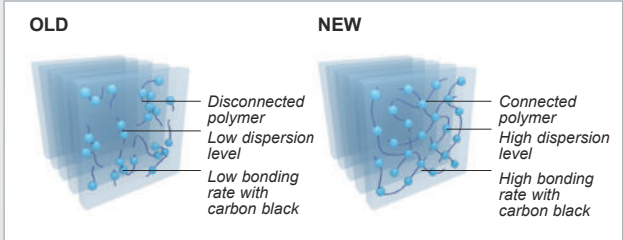
Improved shoulder lug design ensures long mileage performance.

Optimized footprint helps prevent irregular wear which enables longer tread life.



### New Compound Mixing System

The New Mixing System, Innovation Mixing System, (IMS) minimises disconnection of polymer chains and oxidation.



### Test Result

