

AH33

Bespoke internal structure for optimised steer performance

Belt structure

Optimised belt structure with minimised belt deformation leads to extremely low rolling resistance.

Carcass structure

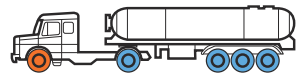
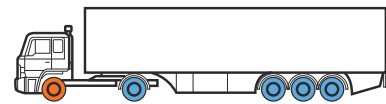
Enlarged carcass profile with a reinforced belt cord ensures excellent durability.

Bead structure

Reinforced bead structure provides enhanced durability against loaded weight.

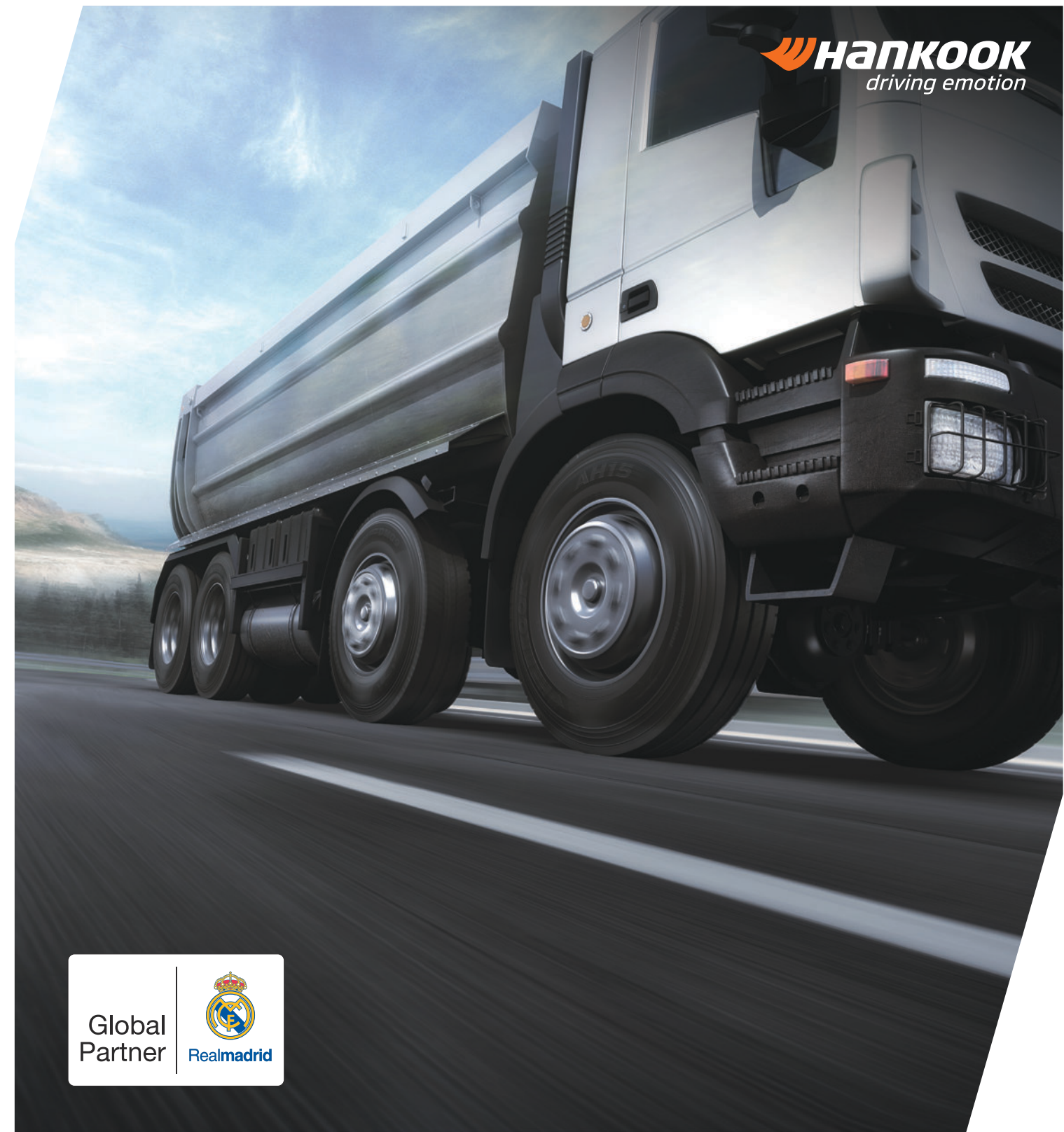
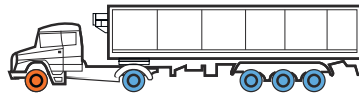


Recommended vehicle and tyre position



● Recommended position

● Available position



AH33

Premium regional tyre developed for superior control and extended tread life for Australian road conditions.



Premium Regional Steer Tyre developed for superior control and extended tread life

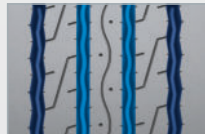
Tyre life is increased by a new compound technology and extra wide and deep tread design.



Kontrol Technology is Hankook Tire's technology philosophy which reflects how the tyre should perfectly control the interaction between the driver, the vehicle and the road while in motion. It is implemented to ensure Hankook Tire provides the greatest benefits and driving experiences to customers in terms of safety, driving comfort, handling, performance and environmental friendliness. The AH33 is an example of a tyre which embodies Kontrol Technology.

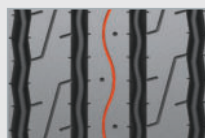
New zig-zag groove pattern designed for Australian road conditions

Semi zig-zag groove increases tread life.



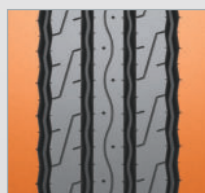
Combined twin straight grooves and twin zig-zag grooves provide increased mileage, durability and stone ejection

Waved kerf design



Waved kerf family pattern for Hankook Premium Regional Haul Steer Tyre

Renewed tread design and foot shape



Wide shoulder improves stability and reduces uneven wear

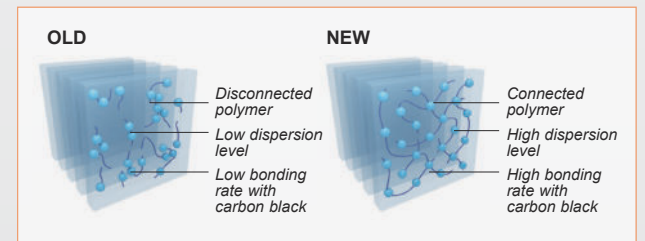


Improves mileage and prevents separation through optimised contact patch footprint



New compound mixing system

The new Innovation Mixing System (IMS) minimises disconnection of polymer chains and oxidation.



Regrooving technical data



Size	PR	Type		Tread Depth m/m	Regrooving Depth m/m	Regrooving Width m/m
		T/T	T/L			
295/80R22.5	16	*		16.2	3	7.6

* Technical data subject to change without prior notice