

hankook
driving emotion



ventus V12 evo

The new power in sports driving



1. Concept

Contents

Concept

Technical Presentation

Test Results

Sizes Range



Pattern design



Concept

The new power in sports driving!

*A new concept in ultra high performance tires that delivers superb control and braking.
Experience unrivalled comfort during high-speed driving.*



Evolution

ventus Sport K104

ventus V12 evo

ventus V12 evo

HANKOOK
driving emotion

Positioning Map of VENTUS V12 evo



Enhanced handling and braking

Solid center rib block

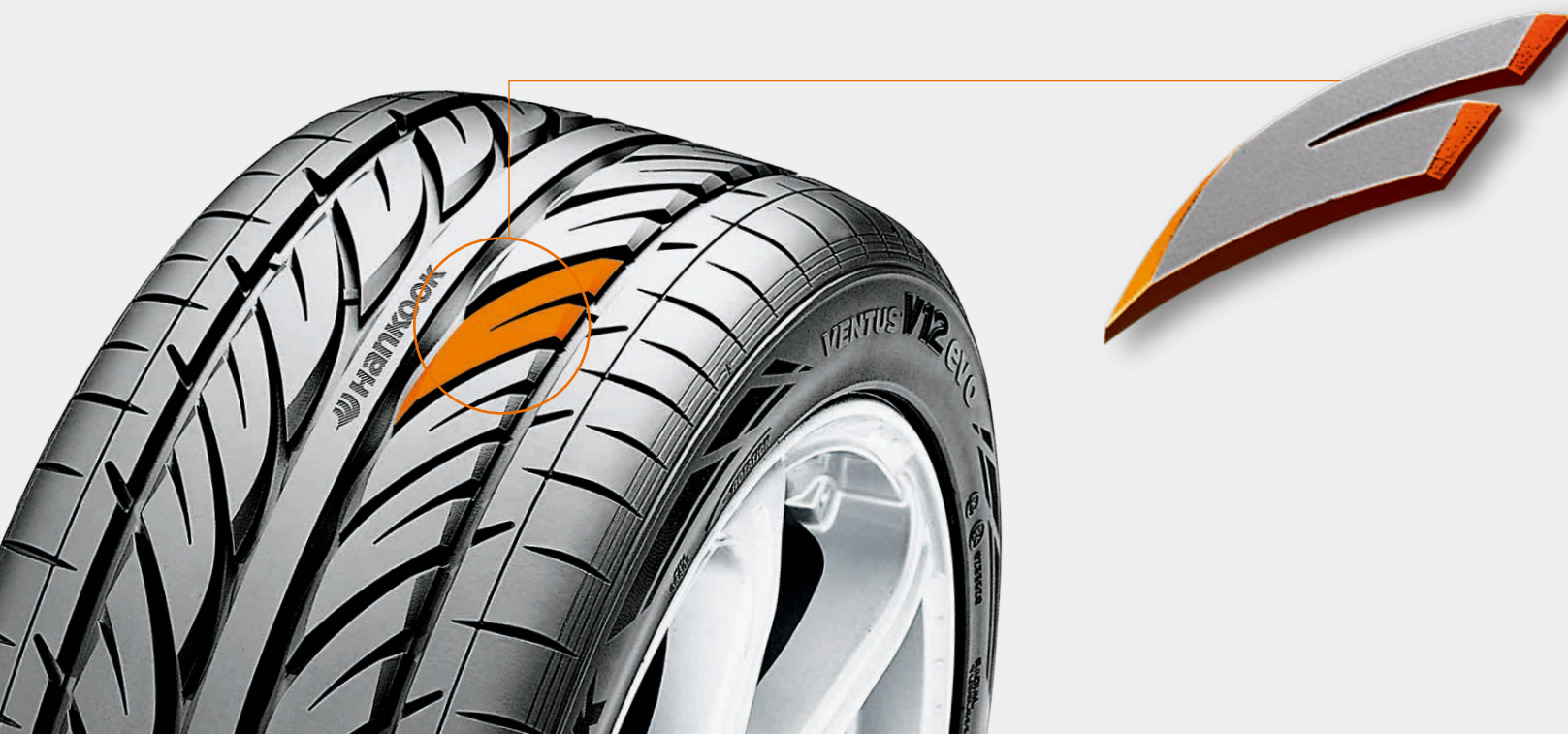
- The solid rib block in the center enhances braking performance.
- It also ensures optimal ground contact pressure and control response at high speeds for excellent handling.



Enhanced handling and braking

3D effect on block edge

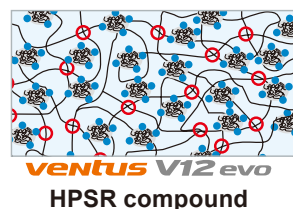
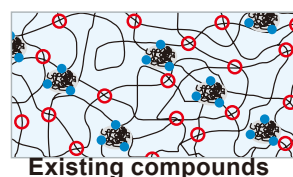
- Diverse angles on the block edge result in a sophisticated design with a three-dimensional effect.
- Ground contact pressure is evenly distributed for optimal handling and braking.



Enhanced handling and braking

HPSR (High Tg Polymer & Specific Resin) compound

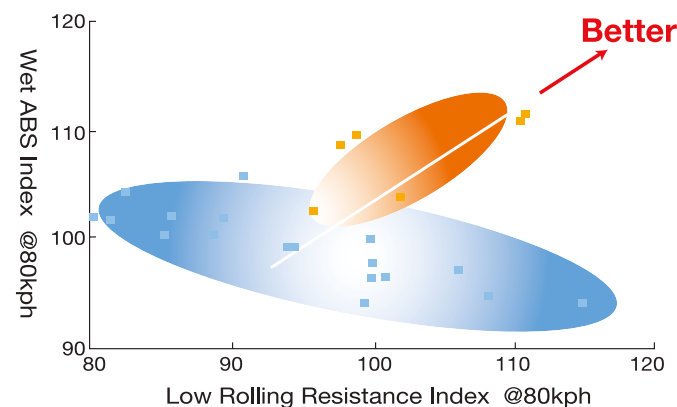
- The use of HPSR compound ensures good traction and braking on wet surfaces.



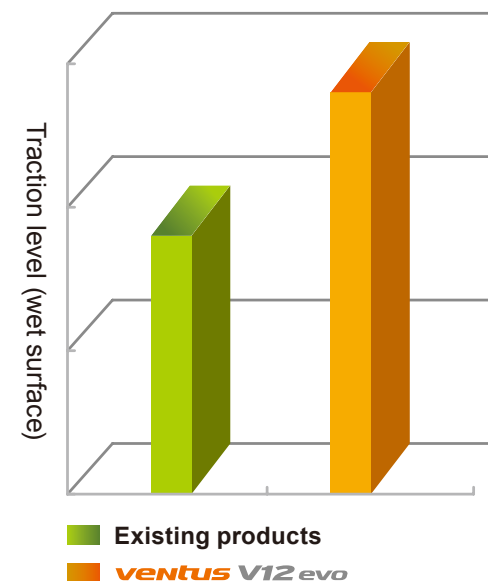
● Silica aggregate ● Silica-rubber coupling
○ Matrix cross link(Rubber-Rubber network)

ventus V12 evo

pattern provides superior wet traction versus existing products.



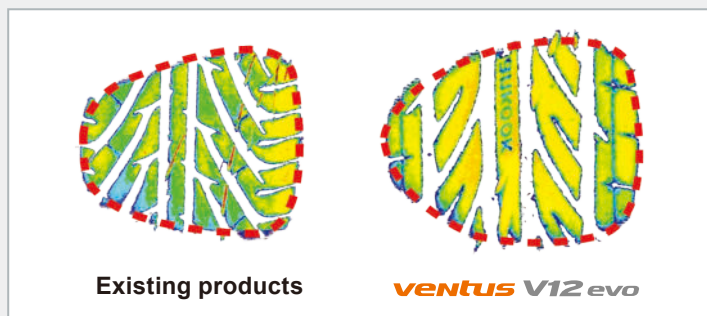
● Advanced HDS compound mixture
● Silica + carbon black mixture



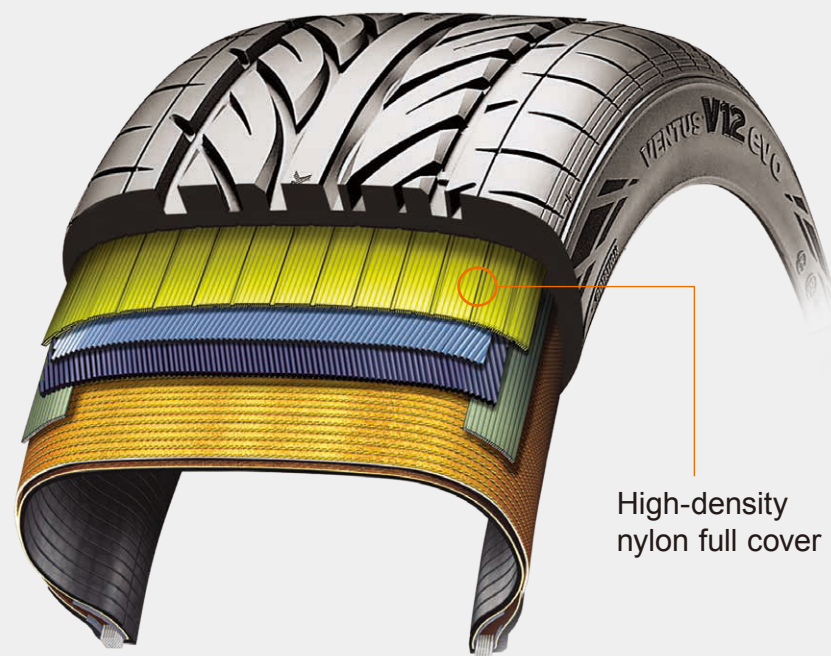
Enhanced handling and braking

High-density nylon reinforcement belt

- Optimized structure featuring a high-density nylon belt leads to even distribution of ground contact pressure during cornering.



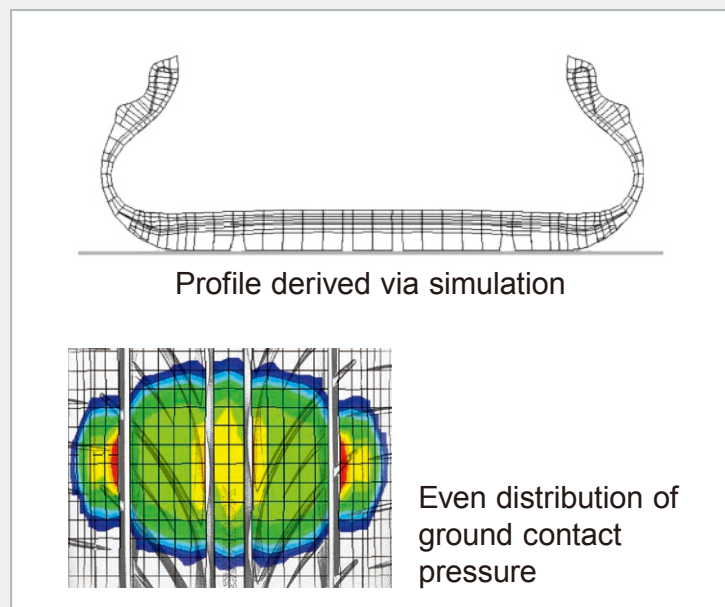
ventus V12 evo pattern provides more even ground contact when cornering versus existing products.



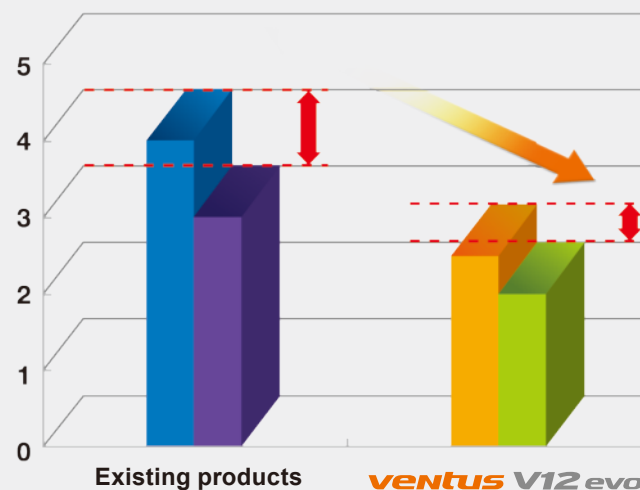
Enhanced handling and braking

Ideal profile

- Profile based on optimal ground contact pressure and simulation boosts braking and handling performance for enhanced safety at high speeds.



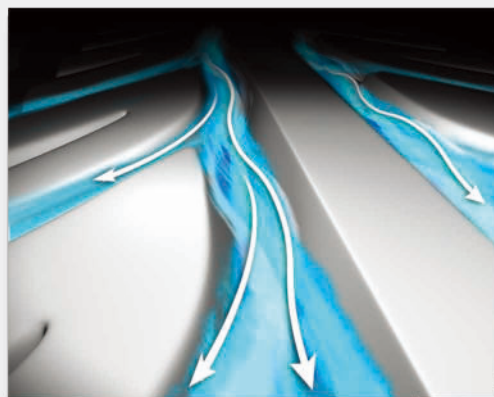
Minimal distortion of center and shoulder parts while driving at high speeds delivers a safer ride and increased durability.



Safe water drainage on wet roads

Efficient water drainage thanks to wide linear groove and Y-shape pattern design

- Wide linear grooves and an aggressive Y-shape pattern design effectively channels water away from the tire.
- This means safe driving on rainy roads.



Y-shape pattern
Improved water drainage



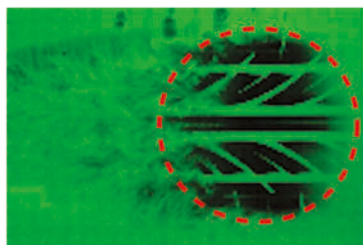
Wide linear grooves
Improved water drainage

2. Control & Braking Performance Technology

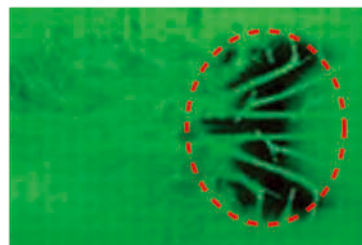
Safe water drainage on wet roads

MTR (Multiple Tread Radius)

- Wide linear grooves and an aggressive Y-shape pattern design effectively channels water away from the tire.
- This means safe driving on rainy roads.



ventus V12 evo



Existing products

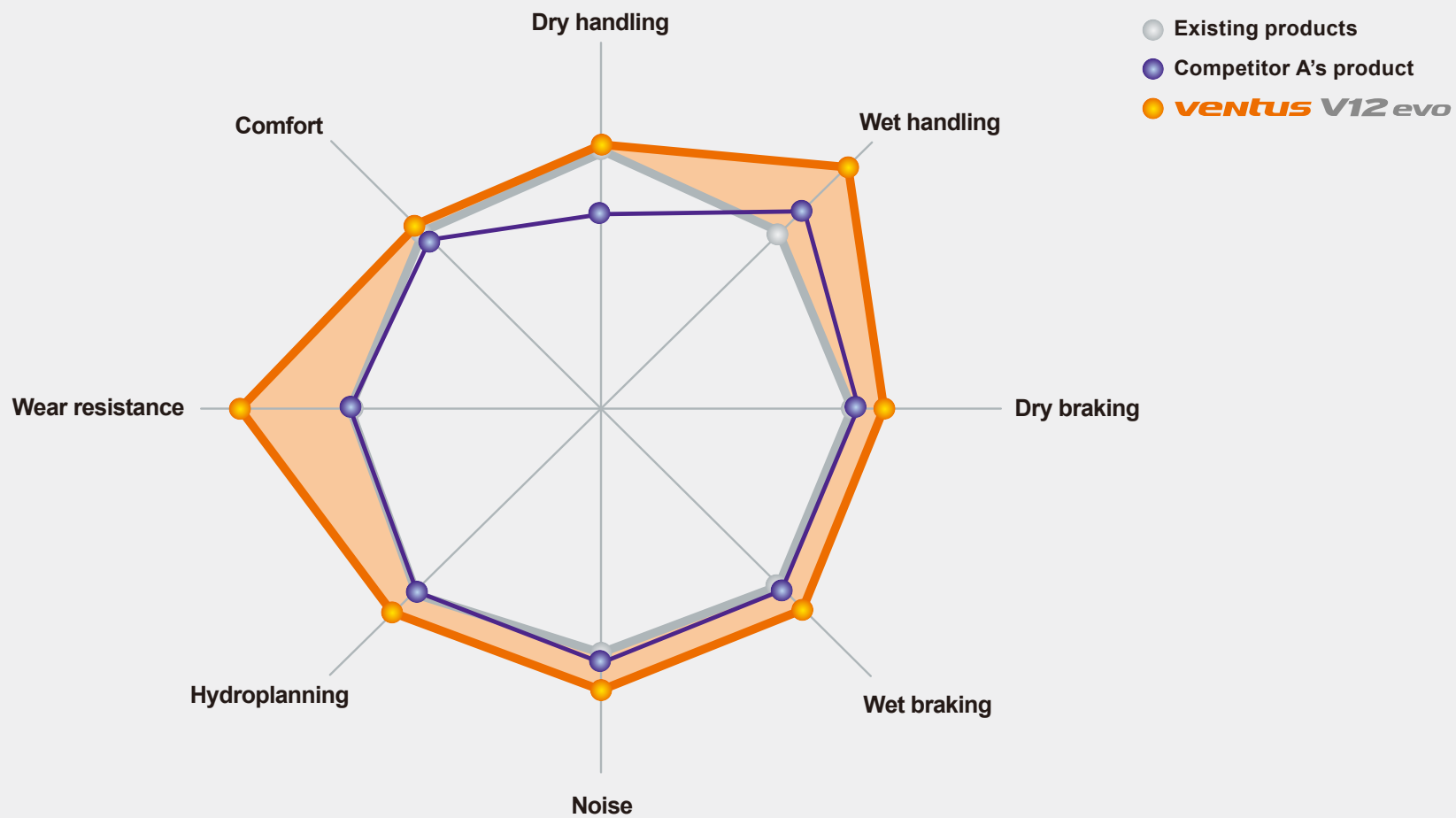
- A wider tire-ground contact area (black area in diagram) and smaller film of water means better water drainage.
 - Effective channeling of water results in better handling and braking on wet roads.
- (Image of tire-ground contact area at 100km/h)

What is hydroplaning?

When a car drives over standing water at high speed, the tire's function to expel water from the grooves decreases, and water resistance leads to a phenomenon in which the tire is lifted off the ground.

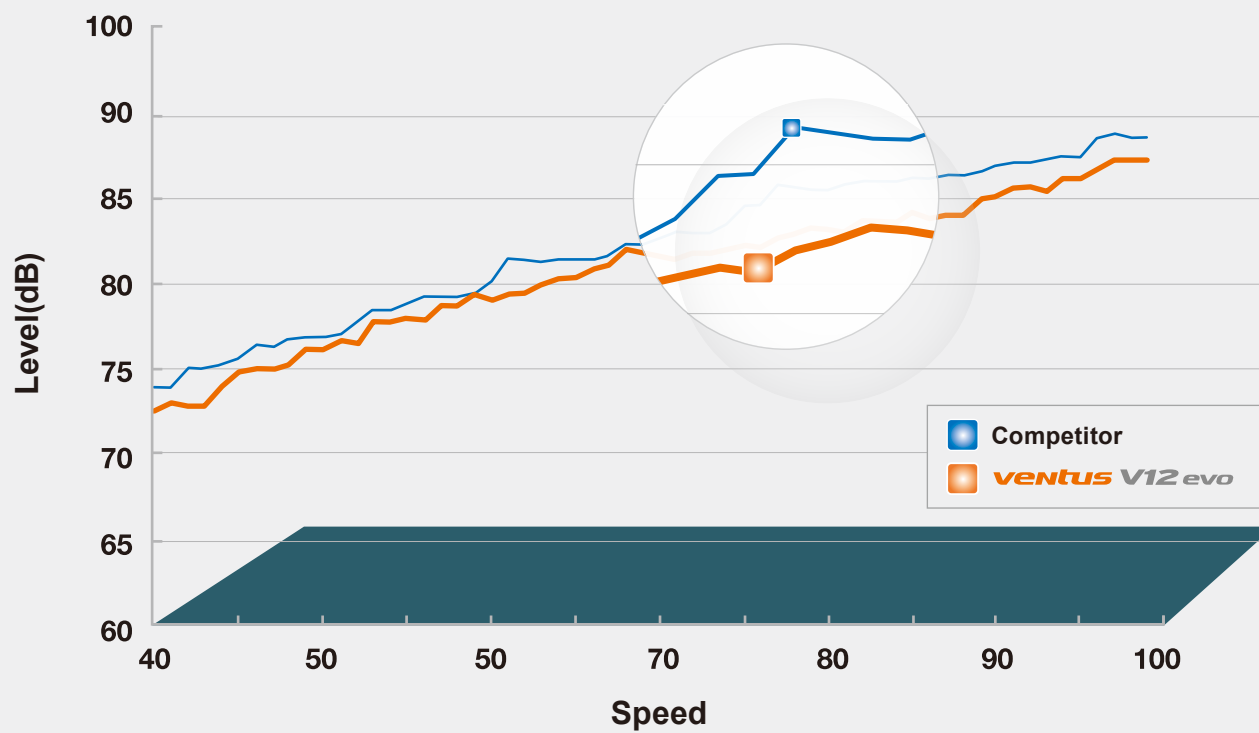
Test results

Performance



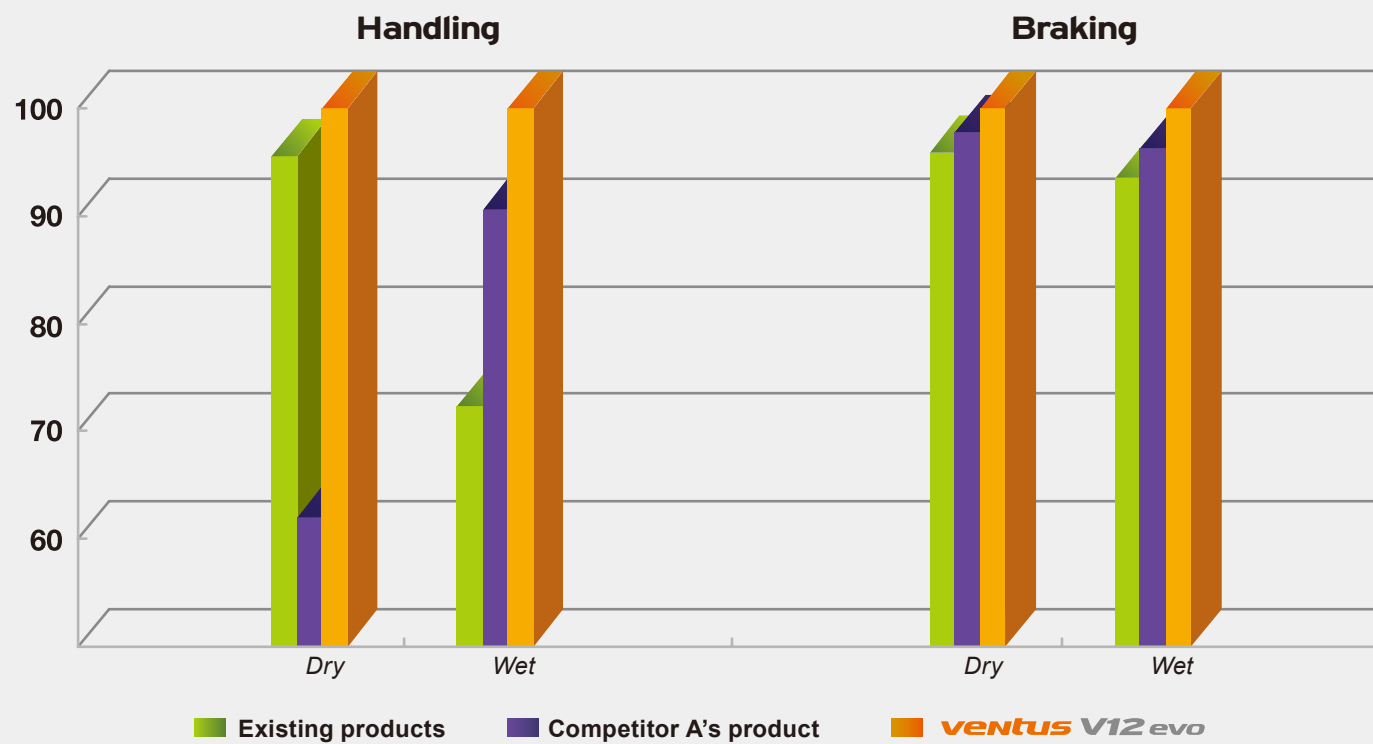
Test results

Performance



Test results

Performance



Test results

Performance

