



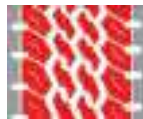
# OH-201



## All Position Tire for Mixed Service applications



Lugs on shoulders withstand impacts and enhance traction performance in both dry and wet conditions



Special Zigzag tread design that offers extra-ordinary resistance against chipping and cutting in off road conditions



Deeper tread delivers longer mileage and wider grooves help in effective water evacuation

Size	PR	Load Index	Speed Symbol	Maximum Load		Max. Inflation Pressure	Rim Width	Section Width	Overall Diameter	Tread Depth
				Single (kgs)	Dual (kgs)					
7.50 R16	14	122/118	L	1500	1320	100	6.00	215	809	13.0
8.25 R16	16	132/130	L	2000	1900	116	6.50	225	858	14.0
10.00 R20	16	147/143	L	3075	2725	116	7.50	276	1058	18.0
10.00 R20	18	149/145	J	3250	2900	135	7.50	275	1058	18.0
11.00 R20	16	150/146	K	3350	3000	120	8.00	295	1089	16.0
11.00 R20	18	152/149	K	3550	3250	120	8.00	295	1058	16.0
12.00 R20	18	154/150	K	3750	3350	125	8.50	310	1124	17.0
11 R22.5	16	148/145	L	3150	2900	125	8.25	280	1055	16.0
295/80 R22.5	16	152/148	M	3550	3150	125	9.00	300	1052	17.0
315/80 R22.5	20	156/150	L	4000	3350	125	9.00	314	1084	15.0
325/95 R24	22	162/160	K	4750	4500	125	9.00	312	1229	19.0

### Regrooving Guidelines

Size	D: regrooving Depth (mm)	W: Regrooving Width (mm)
7.50 R16	2.5	3.0 - 4.0
8.25 R16	2.5	6.0 - 7.0
10.00 R20	2.5	6.0 - 7.0
11.00 R20	2.5	7.0 - 8.0
12.00 R20	2.5	7.0 - 8.0

Size	D: Regrooving Depth (mm)	W: Regrooving Width (mm)
11 R22.5	2.5	7.0 - 8.0
295/80 R22.5	2.5	7.0 - 8.0
315/80 R22.5	2.5	7.0 - 8.0
325/95 R24	2.5	7.0 - 8.0

