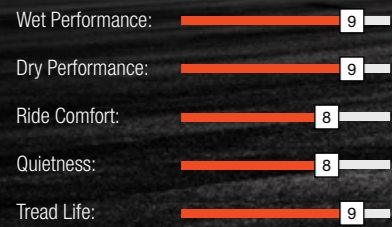




ULTRA HIGH PERFORMANCE SUV TIRE

# ATREZZO SVR LX

### PERFORMANCE RATINGS:

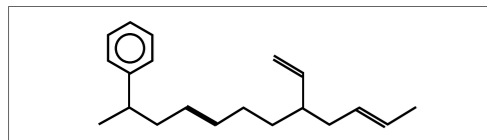


In 2011, the series was selected by the global automotive media to be awarded the "SEMA 2011 Best New Product Award." They also won the China domestic tire brand award for the first time.

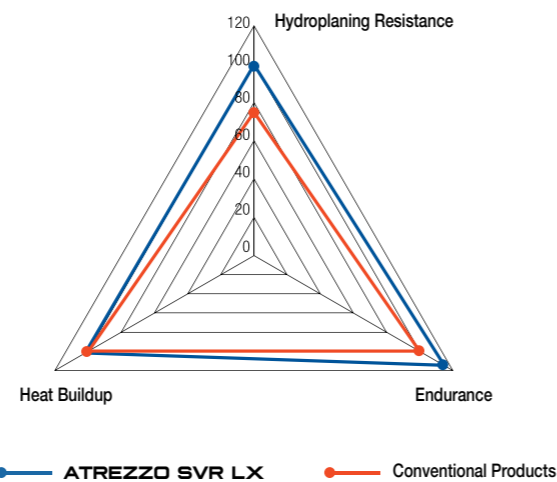


The **ATREZZO SVR LX** is a premium high-performance tire designed for SUV and crossover vehicles. An advanced tread design with a sporty look, the SVR LX accentuates the appearance of your ride, while providing exceptional all-season performance, comfort, and tread life.

- Perfect balance of style, luxury, and all-season performance.
- Available in stylish 20"-24" sizes with M+S ratings for a wide range of OE and plus-size fitments.



- 1 The tread formula compounds ensure excellent wear resistance for greater fuel economy.
- 2 The specialized formula also substantially increases wet grip.



### Groove Design

All grooves are slightly inclined to effectively funnel water out of the tire for improved hydroplaning resistance.



### Shoulder Grooves

The variable pitch design on the shoulder grooves and the sipes improve grip and handling for all seasons. They also effectively reduce noise emissions for improved driving comfort.

## SVR LX

### Directional Tread Pattern

The uniform V-shaped tread pattern design provides excellent grip, handling, and high speed performance in both dry and wet conditions. Efficiently drains water for a safer driving experience.

### Sipe Design

The unique sipe design on the shoulder provides better stability on dry and wet roads as well as effectively reduces noise emissions.





HIGH PERFORMANCE SUV TIRE



# ATREZZO SVR LX

	Size	L.I. / S.R.	P.R.	O.D. mm	S.W. mm	T.D. mm	R.W. inch	L.C.C. 1X lbs@psi	UTQG
20	275/40R20	106W	XL	728	278	9.5	9.5	2094@50	420 AA
	255/45R20	105V	XL	738	255	9.5	8.5	2039@50	420 AA
	275/45R20	110V	XL	756	273	9.5	9.0	2337@50	420 AA
	295/45R20	114V	XL	774	296	9.5	10.0	2601@50	420 AA
	265/50R20	111V	XL	774	277	9.5	8.5	2403@50	420 AA
	285/50R20	116V	XL	794	297	9.5	9.0	2756@50	420 AA
	305/50R20	120V	XL	814	316	9.5	9.5	3086@50	420 AA
	275/55R20	117V	XL	810	284	9.5	8.5	2833@50	420 AA
	275/60R20	119S	XL	838	279	9.5	8.0	2998@50	420 AA

	Size	L.I. / S.R.	P.R.	O.D. mm	S.W. mm	T.D. mm	R.W. inch	L.C.C. 1X lbs@psi	UTQG
22	255/30R22	95V	XL	713	260	9.5	9.0	1521@50	420 AA
	265/35R22	102W	XL	745	271	9.5	9.5	1874@50	420 AA
	265/40R22	106V	XL	771	271	9.5	9.5	2094@50	420 AA
	305/40R22	114V	XL	803	313	9.5	11.0	2601@50	420 AA
	305/45R22	118V	XL	833	303	9.5	10.0	2910@50	420 AA
24	295/35R24	110V	XL	816	301	9.5	10.5	2337@50	420 AA
	305/35R24	112V	XL	824	313	9.5	11.0	2469@50	420 AA
	285/40R24	112V	XL	838	290	9.5	10.0	2469@50	420 AA
	295/40R24	114V	XL	846	301	9.5	10.5	2601@50	420 AA